

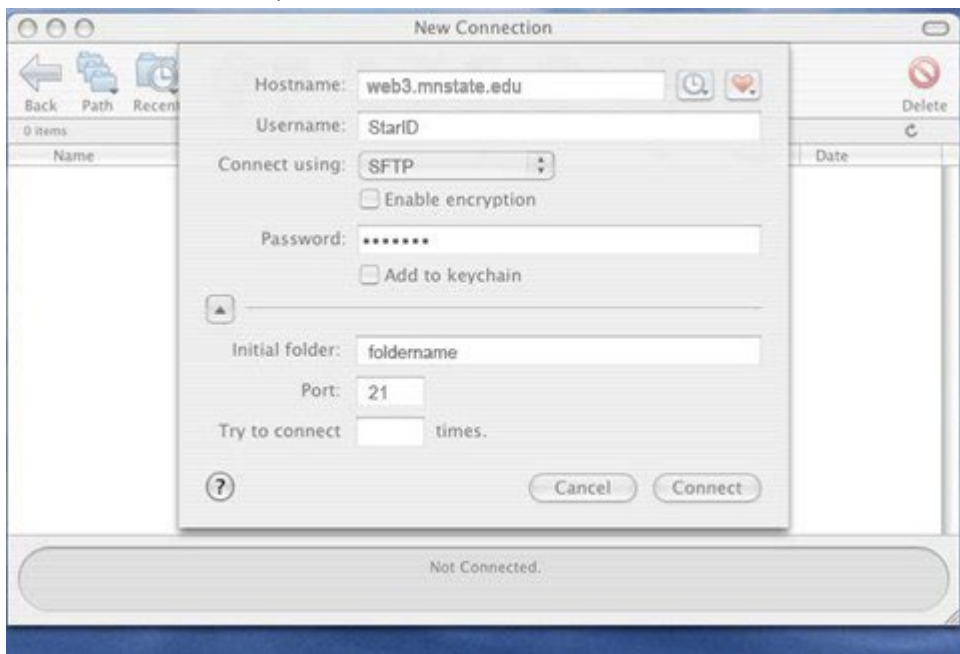
WEB3 (web.mnstate.edu) Fetch Settings

This is high-level settings and instructions on how to connect to the web server **web.mnstate.edu** using Fetch. We do not support anything beyond getting someone connected and authenticated to this web server.

You **MUST be on the MSUM network** in order to establish this connection; if you are not on campus you need to use the VPN client or Direct Access.

USERNAME & PASSWORD for web3 is the users StarID username and password.

1. Open Fetch
2. Enter the parameters
 - a. Hostname: web3.mnstate.edu
 - b. Username: StarID
 - c. Connect using: SFTP
 - d. Password: Your password
 - e. Initial folder: Name of your web folder



3. Click Connect

4. You should then get a screen that looks like this

You can either drag and drop your files into the folder or you can use the 'Get' or 'Put' options at the top.

